



Partnership
Opportunities
2025



The Event

The brainchild of award winning caterer Leonie Kershaw, the Luncheon was first held in 2004 with 200 people attending. So successful was this event that now, 19 years on, the event caters for some 500-600 guests with the entire proceeds distributed between selected South West charitable beneficiaries.

2021 saw a new style Luncheon in the wake of the pandemic, will see the important elements for which the table is known, will be featured but with a number of equally exciting changes.

Staged entirely by volunteers | Organising committee, chefs, a team of 120 + volunteers, in-kind sponsors, attending to all tasks from planning to packing down

It's Unique | A sense of community ownership and shared success as beneficiaries and not-for-profit groups work side-by-side

Food and wine donated | produce donated by South West producers, Our amazing chefs transform donated meats, fruit, vegetables and herbs into mouth-watering dishes to delight diners

Donated and In-kind goods and services | Local businesses donating special and unusual items to be auctioned, increasing funds for distribution to charities

Marketing Opportunity | Extend your business objectives, achieve extensive marketing and build brand recognition

From the Founder

In 2004 this event was hatched over a coffee with Don Hancey. The idea of the luncheon was to showcase the local amazing chefs in conjunction with local businesses to put Bunbury on the Map. In volunteering for this event the hospitality industry could give back to the people who support them thus the birth of the Chefs Long Table Charity Lunch.

Many of the business, volunteers and chefs have been with the charity event from its inception and still hold the passion, along with new committee members, chefs and businesses to ensure its continued success of this event. Over the 20+ years over \$1.4 million has been given to varied beneficiaries in the South West region.

The Table continues to develop and evolve now seating 300+ people, 18+ chefs who create incredible dishes, over 100 volunteers and 90 suppliers. All of these donate their time, knowledge, expertise, produce and more to ensure the success of this charity event. I can't thank them enough as without them the Table would not be the highly successful event it is today. Raise your glass and enjoy the Chefs Long Table Charity Lunch.

Leonie Kershaw, Founder

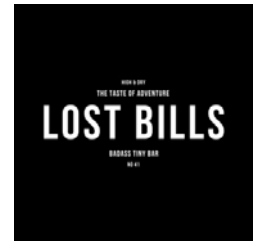
Overview

We invite you to become part of the most exciting and highly regarded charity event in the South West - Bunbury's annual food and wine premier event. Chefs Long Table Charity Lunch

In the 20+ years since its inception, and entirely voluntary committee has raised and distributed over \$1.4 million in South West charities, not for profits and deserving organisations, Enabling them to expand their services or introduce new programs and services for people in need throughout the region.

We know the Chefs Long Table Charity Lunch is making a real difference from the feedback we receive from our sponsors, beneficiaries, volunteers, donors and guests who come to enjoy the dining event, year after year.

Our Event Partners



Dining Partners



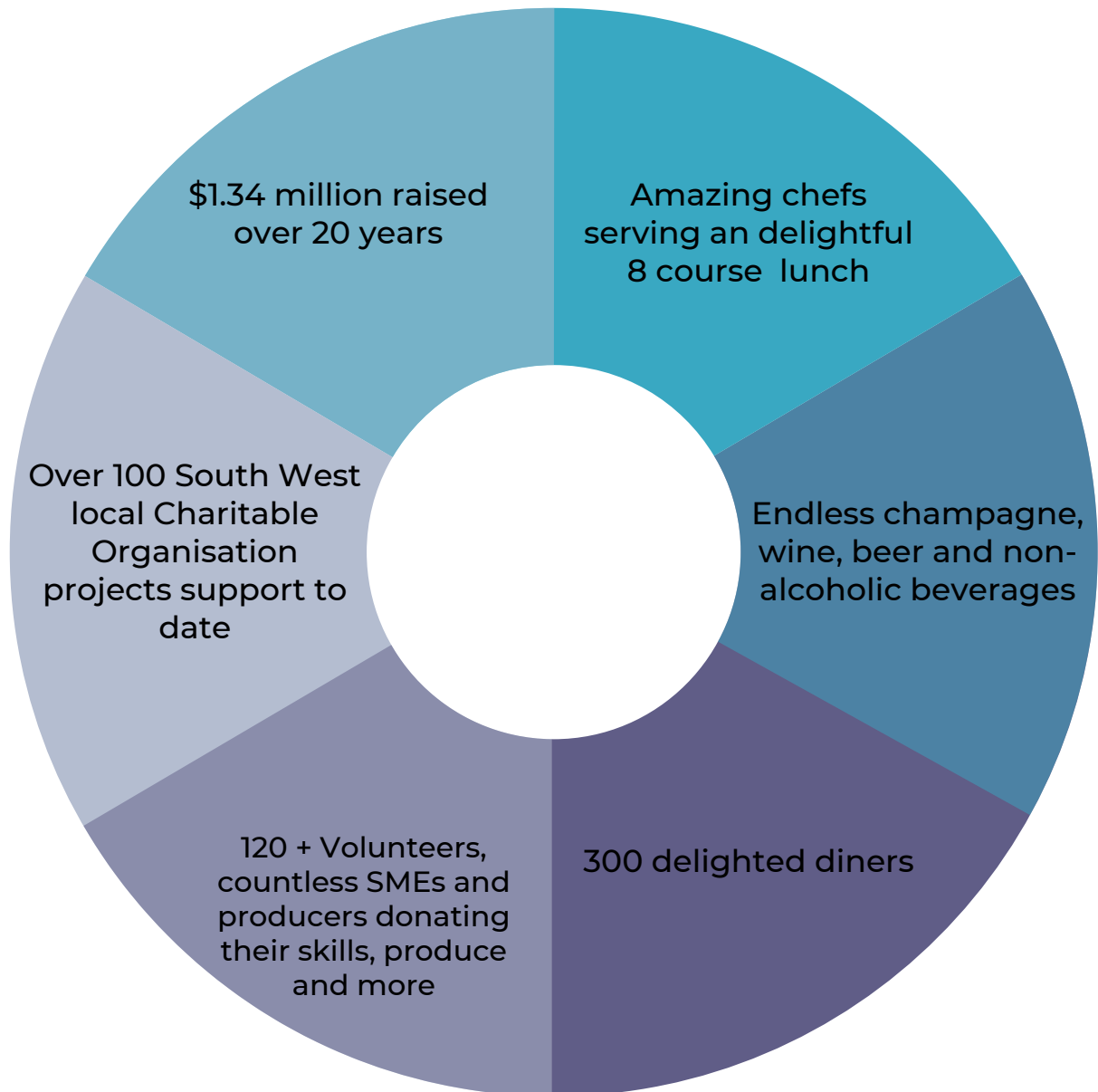
PRESTON VALLEY GROVE



Beverage Partners



Our Elements of Success



The Chefs Long Table Charity Lunch is a 5 hour banquet full inclusive of:

- Eight course unique, fantastic meal designed by SW Chefs utilising donated locally grown produce
- Range of beer, wine, champagne and soft drinks
- Entertainment to complement the occasion
- Networking amongst friends, colleague and business operators
- Live auctions
- Dancing



Our History

- 2004 | Timber & Jetty Conservation Society Bunbury | Special timbers for jetty
- 2005 | Timber & Jetty Conservation Society Bunbury | Special timbers for jetty
- 2006 | Silver Chain Bunbury | Purchase car to transport disabled, aged & isolated older adults
- 2007 | Beneficiaries Val Lishman Health Research Foundation | Prevention of Youth Suicide in the South West
- 2007 | Riding for the Disabled | Fit for purpose Saddle and Horse
- 2008 | Major South West Refuge 'Outreach | Support women & children exiting the Refuge & commence a pilot program into the effects of family and domestic violence on children.
- 2008 | Foster Families South West | Costs in placing foster children
- 2008 | Leukaemia | Leukaemia Fund Raising Run
- 2008 | Mayumarri W (Heal for Life) | Retreat for survivors of abuse
- 2008 | Dylan Bowlden (Individual) | V/MAX communication device
- 2008 | Crewsaders Dragons Abreast | Special trolley to load and move dragon boats
- 2008 | Dardanup Lions Club | Equipment for Men's shed
- 2008 | St Mary's Community Care | Camp for siblings of disabled
- 2008 | Scott Family (Individual) | Bring family carer from interstate to give special care to a critically ill child
- 2008 | Apprentice Chef Scholarship to Cambodia | Clare Castieau - to spend time at a catering school in Cambodia
- 2009 | Rotary Foodbank South West | 2 tonne vehicle for food transport - pick-up and delivery
- 2009 | St John Ambulance Australind | Heart Defibrillator
- 2010 | Life Saving Club City of Bunbury | New competition boat
- 2010 | Milligan: Community Learning & Resource Centre | Supporting a variety of community programs
- 2010 | St John Ambulance Australind | Communication equipment
- 2010 | Capel CWA (Individual) | Pool for Nathan Project
- 2010 | Crewsaders Dragon's Abreast | Purchase light paddles
- 2010 | In Town Lunch Centre | Food Vouchers for clients and drop-ins (no alcohol nor cigarettes)
- 2010 | Leschenault Men's Shed (Bunbury Rotary Club) | Equipment for new shed
- 2010 | Riding for the Disabled Association | Ride-on lawn mower
- 2011 | Sea Rescue Bunbury | Contribution to funds raised by the group to enable purchase of a new sea rescue vessel
- 2011 | Men's Shed Project - Rotary Club of South Bunbury | Equipment to build shed
- 2011 | BALYA | Cancer Retreat Week/Bike Week
- 2011 | College Row | S.W.I.M. Project
- 2011 | Carey Park Scout Group | Large tent for bush camping
- 2011 | Heal for Life | Communications equipment for disabled child
- 2011 | Solaris | Massage tables for cancer and recovering patients and carers
- 2011 | Kasey Price (Individual) | Computer for disabled child
- 2012 | South West Youth Driver Development Program | Develop basic driver skills through training in a safe environment
- 2012 | Anglicare WA - Hudson Road | Television for children's area while parents are in counselling
- 2012 | Binningup Christian Youth Camp | New kitchen equipment
- 2012 | Disability Services Support Group Harvey | Dad's Camp
- 2013 | RFDS Flying 1000 | Purchase 2 Zoll MD Cardiac Monitors for aircraft used in the SW
- 2013 | Disability Services Support Group Harvey | Dad's Camp
- 2013 | Bethany Fields Aged Care Craft Group | Materials for toys to be given out to needy children at Christmas
- 2013 | RSL Bunbury | Upgrade two computers for Organisational administration
- 2013 | Surf Life Saving Club City of Bunbury | Timing equipment for Fun Runs and training
- 2013 | Foodbank South West | Fruit 'dumpster' boxes for growers to fill ready for transporting
- 2013 | Lions Club of Millbridge | Fit out new BBQ tailer (used at Luncheon as required)
- 2013 | Smiths Beach Surf Life Saving Club | Nippers and Juniors training boards

Our History

2014 | Meals on Wheels & Senior Citizens Assn Bunbury | Assistance to refurbish centre

2014 | Heal for Life Foundation | Subsidise survivors of childhood trauma and abuse attend a healing centre

2014 | BUZZ Nurture Works Busselton | Replace ageing vehicle. Teaches skills for social & emotional wellness.

2014 | Regional Entertainment Centre Bunbury | Fit out 'Capel Room' - furniture and fittings

2014 | Surf Lifesaving Club City of Bunbury | New kitchen equipment

2014 | Sea Search & Rescue Bunbury | Competition & training equipment

2014 | Milligan Community Soccer Program | Street soccer program

2015 | Museum & Heritage Centre - Bunbury | Equip the "Classroom" at newly renovated centre

2015 | Melanoma WSA | Melanoma March equipment hire, banners, signage and promotional materials

2015 | RFDS Flying 1000 | Purchase 4 pumps to administer fluids in-flight

2015 | Men's Shed Bunbury | Timber and equipment for members to use

2015 | South West Wind & Jazz Orchestra | Uniforms for competition performance

2015 | Hands Up 4 Kids Reading Volunteers | Communication equipment for new organisation recruiting volunteers to help poor readers

2015 | Historical Society - Bunbury | Publication costs

2016 | Koombana Bay Recreational Fishing Platform | Lighting & water to jetty/entry statement (Later withdrawn as licencing/permit issues prevented progress)

2016 | Val Lishman Health Research Foundation | Autism in Rural Communities project - purchase 30 iPad for SW families with a child with ASD to aid research data collection

2016 | Riding for the Disabled SW Centre | Purchase water tanks

2016 | Community Home Care | For Television, audio equip & mic for activities room

2016 | Meals on Wheels & Senior Citizens | Kitchen equipment table top deep fryer and new bench to safely house this

2017 | RFDS Flying 1000 | Busselton -purchase a Zoll X series critical care monitor for RFDS Pilatus PC12 aircraft

2017 | Make a Wish Foundation | To grant a wish to a child living in the South West who had a critical illness (child anonymous)

2017 | Rotary Sail Into Life | Purchase and build an all-access Motorised Pontoon for use in Koombana Bay especially suitable for people with disabilities.

2018 | Surf Life Saving Club - Bunbury | Purchase large kitchen equipment for facility upgrade

2018 | Rotary Club of Bunbury Leschenault Give a Damn Give a Can | Purchase collection boxes for Give a Damn Give a Can annual appeal, placing these in major stores

2018 | Heal For Life | Residential experience for young female victims of trauma and abuse

2018 | GP down south | Conduct a youth mental health program for Warren Blackwood High School students

2018 | Lishman Health Foundation | Quality in End of Life research

2018 | SW Academy of Sport | Purchase blue chip timing system

2018 | SW Women's Health & Information Centre | Support parents of still-born infants

2018 | 2nd Bunbury Sea Scouts | Purchase adventure equipment for Scouts camping out

2018 | Leschenault Scout Group | Data projector and screen for training

2018 | Dalyellup Men's Shed | Timber for members to make toys for charity

2019 | Beneficiaries Volunteer Fire and Rescue Bunbury | AV equipment for training

2019 | Dalyellup Seasons Shed | Materials for toys for charity

2019 | Leschenault Catchment Council | Bat and Possum Nests

2019 | Newton Moore Senior High School | Coffee machines & training

2019 | Lishman Health Foundation | Best practice model for GP's re alcohol and drug use identification

2019 | Investing In Our Youth/SW Driver Education R4DE | Purchase automatic vehicle for training disadvantaged youth

2019 | Projects of the Heart & Soul | Construct labyrinth in Queens Park





Our History

2020 | Beneficiaries Seniors & Community Centre Bunbury Geographe | 3 glass door upright freezer

2020 | Rowers Club - Bunbury | Towards purchase coxless quad rowing boat

2010 | Swimming Club Bunbury | Renovated & upgrade Club kitchen

2020 | Dalyellup Men's Shed | Timber for members to make toys for Salvation Army

2020 | Guide Dogs WA (VisAbility) | Training and assistance for Bunbury impaired vision resident

2020 | Legal Rescue Refuge/Community Legal Centre | Support safe house residents with on-site legal assistance

2020 | Smart2Ask Pop Up Expo | Introduce event for disadvantaged to meet helping services

2020 | SW VET Link | Day conference led by young people with disabilities

2020 | SW Refuge Inc Solar Panels | Solar panel system & 4 transitional solar units to reduce costs

2020 | SW Women's Health & Information & Carey Park Parent & Child Centre | Support for mothers at risk of post-natal depression. Cook and freeze baby foods.

2020 | Tenth Light Horse Bunbury Troop | Restore and repair a rare historic ex-army Landrover Field Ambulance

2021 | BARRC Bunbury Animal Rescue, Rehome Care | Training and educational materials for dog foster carers

2021 | SWWHIC Mobile coffee & chat with friendly advisors | Women will discuss safety pathway options for domestic violence & general sexual health

2021 | SW Community Legal Centre with Women's Refuge | Continue offering legal advice to women in Safe House having escaped domestic violence

2022 | Lionheart Camps for Kids | bereavement program in the South West that supports 5-12 year old grieving children following the death of their parent, primary caregiver or sibling

2022 | Rotary Sail into Life | Purchase new Life Jackets for volunteers and participants and provide training for volunteers to gain Recreational Skippers Tickets to enable them to skipper the rescue boat - essential in accompanying every sailing and fishing activity.

2022 | South West Refuge | The Safe at Home Program is a homelessness prevention strategy which is underpinned by the injustice in the expectation that women should be forced to leave their home to escape violence.

2022 | Busselton Hospice Care | "Lasting Words" Pilot Project allows terminally ill people to have their stories, thoughts and special memories captured.

2022 | Riding for the Disabled | Enable the purchase of riding boots and helmets, essential equipment for the young people to participate in this unique learning experience.

2022 | Leschenault Sporting Association | Purchase a VEO CAMERA to assist in training junior and senior players, coaches and referees involved with the six clubs of the Leschenault Sporting Association (Australind) .

2023 | Busselton Senior Citizen Centre Inc | Kitchen Upgrade

2023 | Bunbury City Band | Purchase of new music stands

2023 | PCYC | Funds to run the Youth Fair

2023 | Seniors Recreation Council of WA Bunbury Branch | Purchase of promotional materials

2023 | Morrissey Homestead | Purchase of specialised hospital beds for respite homes

2024 | South West Womens Health & Information Centre | Refurb of new Van Health Hub

2024 | Bunbury Bush Fire Brigade | Create an outdoor space for volunteers to be able to debrief, recover and spend time with other members

2024 | Doors Wide Open | Replace commercial oven and improve kitchen

2024 | Bunbury & Districts Little Athletics | Purchase new equipment for junior athletes

2024 | Goomburrup Aboriginal Corporation | Upgrade cookware and purchase appliances to assist in preparing cooked meals for community members

2024 | Pregnancy Assistance Bunbury | Purchase of nappy bags and contents which are essential items

2024 | Rotary Sail into Life Bunbury | Purchase new sails for three boats

2024 | Tuart Forrest Toy Library | Purchase more toys

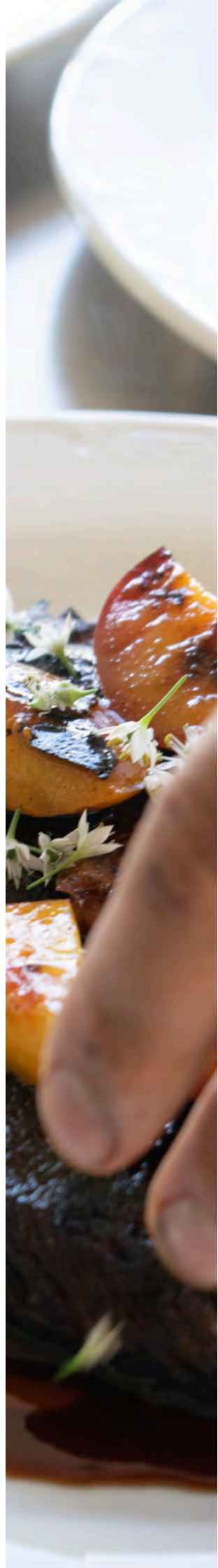
2024 | Safe at Home (Harbour) | Install roller-shutters to increase security

Our Media Partners



Exposure and Community Impact for Your Brand

- Your logo proudly displayed and cycled on the RetraVision e-marketing screen facing the Balir Street and Bussell Highway intersection
- Your logo prominently displayed to acknowledge your support for the event and for the beneficiaries
- Your brand and participation identified in the official program on the day given to every guest
- Your contribution acknowledged by the MC throughout the event
- Access to the CLTCL logo and photos of the event for use in your own publications, website and social media
- Your logo and business displayed on the CLTCL website



Partnership Opportunities

Principle Partnership-Marquee

3 year contract for sponsorship and payment of the Chefs Marquee. Cost of \$10'000 per year.

This will give you:

- The opportunity to have your banners hung on the outside of the marquee on each entrance and premium location. These will be the first banners that are seen by guests.
- Primary space inside the cover page of the Event program for your company logo
- ½ page article about your company and its partnership with the lunch
- premium location of your company banners (self-standing or pegged) on the day of the event
- 5 sponsor posts on our socials with the content of your choice (this can be shared from your own posts that you want shared across to our page, or you can send through the content you want posted), along with an additional 2 sponsorship posts done by our marketing team in the 12 month lead up to the event
- first opportunity for your logo to be on any promo gear to be handed out on the day. Cost to be absorbed by yourself.

Premium Partnership-Auctions tent

3 year contract for sponsorship and payment of the Chefs Auction Tent. Cost of \$10'000 per year.

This will give you:

- The opportunity to have your banners hung on the outside of the marquee (auction area side) on each entrance and premium location. These will be the first banners that are seen by guests.
- Primary space inside the cover page of the Event program for your company logo
- ½ page article about your company and its partnership with the lunch
- premium location of your company banners (self-standing or pegged) on the day of the event
- 5 sponsor posts on our socials with the content of your choice (this can be shared from your own posts that you want shared across to our page, or you can send through the content you want posted), along with an additional 2 sponsorship posts done by our marketing team in the 12 month lead up to the event
- first opportunity for your logo to be on any promo gear to be handed out on the day. Cost to be absorbed by yourself.

Corporate Partnership

3 year contract with a cash payment of \$5000 each year Plus a raffle or auction item valued at \$2500 for each year (Total of \$7500 per year)

This will give you:

- The opportunity to have your banners hung on the inside of the marquee on each entrance.
- Space inside the cover page of the Event program for your company logo
- 1/3 page article about your company and its partnership with the lunch
- Premium location of your company banners (self-standing or pegged) on the day of the event
- 3 sponsor posts on our socials with the content of your choice (this can be shared from your own posts that you want shared across to our page, or you can send through the content you want posted), along with an additional 2 sponsorship posts done by our marketing team in the 12 month lead up to the event
- opportunity for your logo to be on any promo gear to be handed out on the day. Cost to be absorbed by yourself.





Branding Partnership

3 year contract with an in-kind payment/donation of goods or services of \$5000+ each year

This will give you:

- The opportunity to have your banners hung on the inside of the marquee
- Space inside the cover page of the Event program for your company logo
- premium location of your company banners (self-standing or pegged) on the day of the event
- 2 sponsor posts on our socials with the content of your choice (this can be shared from your own posts that you want shared across to our page, or you can send through the content you want posted), along with an additional 2 sponsorship posts done by our marketing team in the 12 month lead up to the event
- opportunity for your logo to be on any promo gear to be handed out on the day. Cost to be absorbed by yourself.

Affiliate Partnership

2 year contract with an in-kind payment/donation of goods or services of \$2000+ each year

This will give you:

- The opportunity to have your banners hung on the inside of the marquee
- Space inside the Event program for your company logo
- Location of your company banners (self-standing or pegged) on the day of the event
- 2 sponsor posts on our socials with the content of your choice (this can be shared from your own posts that you want shared across to our page, or you can send through the content you want posted), along with an additional 1 sponsorship posts done by our marketing team in the 12 month lead up to the event
- opportunity for your logo to be on any promo gear to be handed out on the day. Cost to be absorbed by yourself.

Community Partnership

1 year contract with an in-kind payment/donation of goods or services of \$1000+ each year

This will give you:

- The opportunity to have your banners hung on the inside of the marquee
- Space inside the Event program for your company logo
- Location of your company banners (self-standing or pegged) on the day of the event
- 1 sponsor posts on our socials with the content of your choice (this can be shared from your own posts that you want shared across to our page, or you can send through the content you want posted), along with an additional 1 sponsorship posts done by our marketing team in the 12 month lead up to the event
- opportunity for your logo to be on any promo gear to be handed out on the day. Cost to be absorbed by yourself.

If these packages do not fit your parameters we are happy to sit down and discuss options with you.

Friend of the Table

3 year contract with a cash payment of \$1500 each year

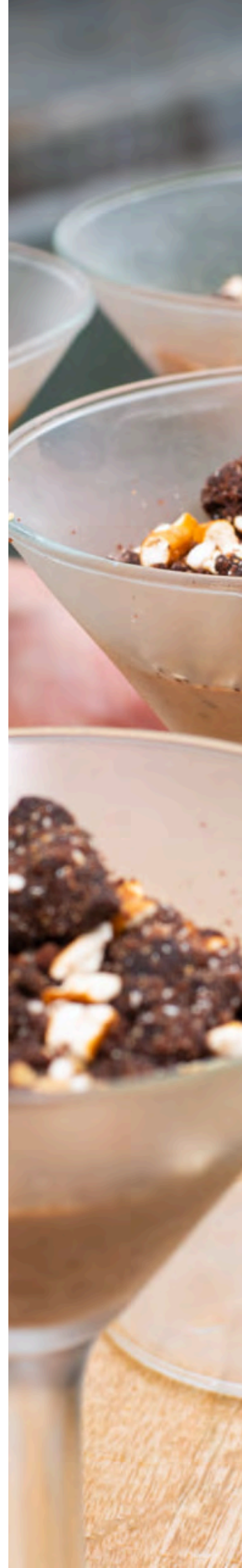
This will give you:

- 2 x Tickets to the 3 years
- 1 x Certificate of appreciation for each year
- 2 x Engraved glass drinkware for each year
- 1/3 of a page of the Event program is allocated to the "Friends of the Table" which will include a photo of each "Friend". Samples of the program pages from 2023 and 2024 bellow.

This package is limited with only 3 positions available. To secure your position as a "Friend of the Table" contact

admin@chefslongtable.com.au

danni.butson@waskills.com.au | Chairperson





Contact Us

For sponsorship and auctions please contact: us at admin@chefslongtable.com

For ticket enquiries please contact us at tickets@chefslongtable.com